

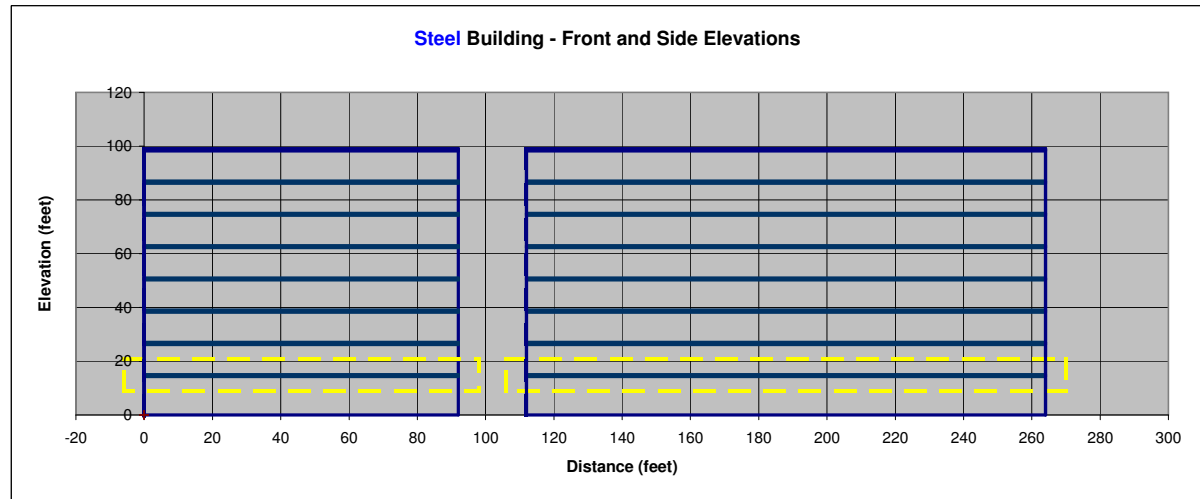
Project Sample Project, Anytown  
 Job No. 202322.1  
 By AL  
 Date 11/27/23  
 Sheet \_\_\_\_ of \_\_\_\_

Company Name  
 Company Address  
 Company Tel/Fax  
 Company Website

NBSD-Software.com

**LOCATION OF TYPICAL WF SHAPES AND SPLICE LOCATIONS - SPECIAL MOMENT RESISTING FRAMES**  
**ASCE 7 SECTION 12.8 - EQUIVALENT LATERAL FORCE PROCEDURE - RIGID DIAPHRAGM ANALYSIS**  
**SAMPLE PROJECT, ANYTOWN - NEW DESIGN**

	N-S Direction	W-E Direction
LFRS	SMRF	SMRF
	OK	OK



Note: Splice Location is located below the Floor Level shown.

Floor Level	Story Weight, W <sub>s</sub> (kips)	Floor Elevation, H <sub>x</sub> (feet)	N-S SMRF									W-E SMRF								
			WF Beam Shape		Splice Location	Exterior/Perimeter Columns			Interior Columns			WF Beam Shape		Splice Location	Exterior/Perimeter Columns			Interior Columns		
			WF Shape	I <sub>xx</sub> (in <sup>4</sup> )		WF Shape	I <sub>xx</sub> (in <sup>4</sup> )	I <sub>yy</sub> (in <sup>4</sup> )	WF Shape	I <sub>xx</sub> (in <sup>4</sup> )	I <sub>yy</sub> (in <sup>4</sup> )	WF Shape	I <sub>xx</sub> (in <sup>4</sup> )		WF Shape	I <sub>xx</sub> (in <sup>4</sup> )	I <sub>yy</sub> (in <sup>4</sup> )	WF Shape	I <sub>xx</sub> (in <sup>4</sup> )	I <sub>yy</sub> (in <sup>4</sup> )
R	1,696	99.0	W24X76	2,100		W14X120	1,380	495	W14X120	1,380	495	W24X55	1,350		W14X120	1,380	495	W14X120	1,380	495
8	1,574	87.0	W24X76	2,100	x	W14X120	1,380	495	W14X120	1,380	495	W24X68	1,830	x	W14X120	1,380	495	W14X120	1,380	495
7	1,574	75.0	W27X84	2,850		W14X159	1,900	748	W14X159	1,900	748	W27X84	2,850		W14X159	1,900	748	W14X159	1,900	748
6	1,574	63.0	W27X94	3,270	x	W14X159	1,900	748	W14X159	1,900	748	W27X94	3,270	x	W14X159	1,900	748	W14X159	1,900	748
5	1,574	51.0	W27X102	3,620		W14X193	2,400	931	W14X211	2,660	1,030	W27X94	3,270		W14X193	2,400	931	W14X211	2,660	1,030
4	1,574	39.0	W30X108	4,470	x	W14X193	2,400	931	W14X211	2,660	1,030	W30X99	3,990	x	W14X193	2,400	931	W14X211	2,660	1,030
3	1,574	27.0	W30X116	4,930		W14X233	3,010	1,150	W14X257	3,400	1,290	W30X99	3,990		W14X233	3,010	1,150	W14X257	3,400	1,290
2	1,596	15.0	W30X116	4,930		W14X233	3,010	1,150	W14X257	3,400	1,290	W30X108	4,470		W14X233	3,010	1,150	W14X257	3,400	1,290